

Your Future. In English.

Bournemouth

Brighton

Cambridge

Edinburgh

London

Oxford

Stowe School



Contents

Supported learning with Regent	4
Courses	
English World	6
Examination Preparation	8
Mini Group Courses	10
Individual Tuition	12
Home Tuition	13
Summer Camps for ages 7-17	14
Locations	
England	
Bournemouth	17
Brighton	18
Cambridge	21
London	25
Oxford	27
Scotland	
Edinburgh	22
Terms and Conditions	28
Enrolment Form	29

Why choose Regent?

- **The Regent values** of positivity, inclusivity and a results focus shine through our programmes
- **You learn English effectively** – highly structured courses lead to confidence and competence
- **Our innovative courses** go beyond language; we also build your skills, motivation and confidence
- **All ages** – summer camps for age 7-12, 13-17, and 6 year-round schools for professionals, adults and students (age 16+)
- **An inclusive, academic community** – plenaries, the learning lounge, lectures and cultural events create a powerful learning environment
- **See progress** – we have regular tests and video assessments to show you your progress
- **Stylish, well equipped schools**, purposefully designed to enhance the communal learning experience
- **Service** – we are here to help and proud of our service

Welcome to Regent

Regent was one of the first groups of English language schools in the UK. It was established over 50 years ago in 1964 by a passionate, experienced teacher who wanted to found a proper school, with proper teachers and proper courses. Today Regent offers innovative courses in a choice of academically and culturally rich locations that create life changing opportunities for our students. Fundamentally, we understand that *knowing about* English is not enough – what is important is the ability to successfully *use* English in your life.

Positive, inclusive, results focused

Our core values shine through our programmes. We aim for a learning environment which is:

Positive

We believe that everyone can learn to use English effectively, and whatever your current ability we push you to be a more effective communicator. We have high expectations of you and believe you are able to achieve the goals you have, and more.

Inclusive

By being part of our learning community you are surrounded by others with similar ambitions, which helps you to bring out your best. *Whole school* activities like morning plenaries, workshops and social events provide opportunities for you to connect meaningfully with staff and others in the school.

Results focused

We know that a course with Regent can change your life – helping you to excel in your job, win a promotion or a place at university. We help you to think about your future in English, perhaps helping you to clarify or enrich your goals, and through regular assessments we keep you on track to achieve the results you want.

We look forward to meeting you on a Regent course.

Regent Promise

When you study with us you get more than just lessons in a classroom. Our programmes can be life changing. Regent promise a unique course for every learner.

In each Regent School every full time adult student has:

- a welcome and orientation on their first day
- an individual assessment of language ability and needs
- a weekly coaching session with a personal tutor
- the opportunity to take an exam
- video feedback on their spoken performance
- a group project to develop international team working skills
- use of multi-media and study resources on all courses
- an activity and excursion programme
- counselling for future work or academic life





Supported learning with Regent

Your progress matters

We are passionate about your learning experience and work hard to ensure that you leave us with significantly developed skills, confidence and performance in English.

You can expect to make good progress every week. We have a strong *supported learning* framework to help you learn effectively. We have a unique academic programme, with a syllabus linked to the Common European Framework. As well as grammar, vocabulary and pronunciation, we work on your spoken performance with tasks focusing on body language, voice quality and eye contact. We ask you

to work in international teams to develop useful life skills and encourage you to take at least one exam. We set progress tests and structured homework tasks to provide clear support to your learning. On at least 4 mornings a week students join a short, thought-provoking plenary session e.g. on personal qualities, leadership or culture.

Your teacher

Our teachers are our greatest strength and are the main reason for the success of our students. They are passionate about teaching and helping you to develop.

Whatever your level, we push you towards taking an external English language qualification to show your achievement. The longer you stay, the more progress you make.

	Beginner	Elementary	Elementary to Pre-intermediate	Pre-intermediate to Intermediate	Intermediate to Upper Intermediate	Upper Intermediate to Advanced
Exam options available	IELTS 1 BULATS	IELTS 2-3 BULATS	IELTS 4 BULATS TOEFL iBT up to 46 Cambridge KET	IELTS 4-5 BULATS TOEFL iBT 46-61 Cambridge PET	IELTS 6-7 BULATS TOEFL iBT 61-100 Cambridge FCE	IELTS 8-9 BULATS TOEFL iBT 100-120 Cambridge CAE/CPE
Common European Framework	A1	A2	A2 / B1	B1	B2	C1 / C2

Learning outside the classroom

Learning does not only happen in our lessons but continues outside the classroom. Throughout your time with us we want to help you practise your English skills – in the learning lounge, in your accommodation and out at cultural events. That is why we make the school a welcoming and inclusive place where you can easily make friends and build your confidence in another language.

Cultural activities and events

The cultural programme is designed to help you make new friends and discover modern local culture.

Often accompanied by your teachers or other school staff, this is the perfect way to have a great time with your friends, use your English and experience authentic local culture.

At least three events are offered each week. The programme includes activities such as a barbecue, film night, quiz night, trip to a local pub or sports activity.

Approximate costs are available at:
www.regent.org.uk/learn-English/leisure.

Weekend excursions

Typical excursions include: London's West End, Stonehenge, Loch Ness, Leeds Castle, Oxford, Cambridge and overseas trips to many cities in Europe.

Choice of accommodation

We know how important your accommodation is, and so we offer a wide choice.

Homestay

Many students choose homestay – living with local people in their own home. Living with a family gives you the opportunity to practise what you have learned in your lessons and provides an authentic cultural experience.

Self-catering or residential accommodation

This option gives you more independence and allows you to experience life in a student university style residence.

See: www.regent.org.uk/learn-english/accommodation

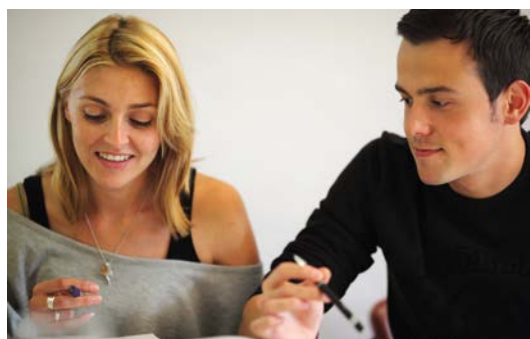
Hotels and apartments

Alternatively, we offer a range of hand-picked hotels and apartments. Please contact us for more information.

Students aged under 18

Please see pages 13-15 for our specialist residential, homestay and home tuition courses for children and teenagers aged 7-17. Students aged 16 and 17 are welcome to study in a Regent school (pages 16-27) and will mix with adults in school and on our cultural events. We offer appropriate levels of pastoral care and welfare support in school and on our events to these students. Students may not be supervised in the evenings and at weekends and we encourage under 18s to spend time with their homestay hosts. If parents or guardians are looking for more support, please consider our Regent Summer School or Home Tuition courses.

Please refer to our guidelines on under 18s at www.regent.org.uk/policies.





English World Courses

- Improve your knowledge, skills and confidence in using English internationally
- Clarify and enrich your goals through personal coaching
- Learn in a maximum group size of 12

English World courses are designed to have an impact on your present and future life in an international environment. Our unique programme has five complementary elements that help you operate confidently and successfully when using English as an international language.

Skills Training develops your speaking, listening, writing and study skills in English in real life contexts.

The Accuracy in Grammar session perfects core grammar skills and works on the eradication of common errors.

The Knowledge for a Global Community class is at the centre of the course. Through individual and team-based research, you work on a broad range of historical, economic, sociological, artistic and cultural topics designed to equip you with the knowledge to function more effectively in the global community. You present your findings in a range of debates, presentations, and group work activities.

The Language Focus session builds reading, writing and vocabulary use in authentic contexts e.g. business writing for emails and reports.

In the Confident Spoken Performance session you develop your confidence and skills in a range of speaking situations through mini role-plays, presentations and public speaking activities. With a focus on rapport building, voice quality, body language, posture and eye contact, we help you display a confident personality in English.

Personal Coaching

Every full time student receives an individual 15 minute coaching session each week, in which goals are set or reappraised, challenges given and progress reviewed. On longer courses we stretch learners by setting additional tasks on which the personal tutor provides feedback.

Intensive courses

You have a lot of contact time with your teacher on a Regent course.



English World

This intensive course comprises 25 hours (one hour = 60 minutes) of study per week, plus 1.5 hours of plenaries, workshops and a coaching session.

Sample Timetable

08.45 - 09.00	Plenary
09.00 - 10.00	Skills Training
10.00 - 10.15	Break
10.15 - 11.15	Accuracy in Grammar
11.15 - 11.30	Break
11.30 - 12.30	Knowledge for a Global Community
12.30 - 13.30	Lunch
13.30 - 14.30	Language Focus
14.30 - 14.45	Break
14.45 - 15.45	Confident Spoken Performance

Timetables are samples and may be subject to change.

Fees per week

Bournemouth, Brighton, Cambridge, Edinburgh, Oxford London*				
No of weeks	2-3	4-7	8-11	12-52
English World	£451	£421	£391	£366

* **London:** please add a supplement of £27 per week.

For a 1 week course, add a supplement of £90 to the 2-3 week price above.

English World a.m.

This course comprises 15 hours (one hour = 60 minutes) of study per week, plus 1.5 hours of plenaries and workshops. Timetable 08.45-12.30 as above.

Fees per week

Bournemouth, Brighton, Cambridge, Edinburgh, Oxford London*				
No of weeks	2-3	4-7	8-11	12-52
English World a.m.	£320	£310	£300	£290

* **London:** please add a supplement of £16 per week.

For a 1 week course, add a supplement of £90 to the 2-3 week price above.

English World dates and entry level

All courses start every Monday throughout the year. Students should arrive on the Sunday. Suitable for beginner to advanced.

English World Combination

Make your course more intensive by adding 5 hours of 1:1 lessons to the English World course (normally taught 16.00-17.00).

Fees per week

Bournemouth, Brighton, Cambridge, Edinburgh, Oxford London*				
No of weeks	2-3	4-7	8-11	12-52
English World Combination	£868	£838	£808	£783

* **London:** please add a supplement of £52 per week.

For a 1 week course, add a supplement of £90 to the 2-3 week price above.

Literature & Culture

This course is designed for the sophisticated, intellectual student who has a passion for learning and already has a good level of English. It includes 50 hours of tuition over 2 weeks. The course has three main areas: Literature Analysis, Writing Workshop, and Arts and Culture.

Fees per course

	Dates	Course	Fees
Oxford	30.06-13.07 28.07-10.08	Literature & Culture	£1,025
Edinburgh	04.08-17.08	Literature & Culture	£1,025

25 hours per week (max 12 per class). Each lesson is 60 minutes. Course includes a cultural programme. Entry level: Upper Intermediate.

Medical English

Build the knowledge, skills and confidence to use English effectively with patients and other medical professionals to provide medical care. The course builds core knowledge in medical terminology using case studies which explore patient conditions and medical situations.

Fees per course

Brighton - 4 week course: £1,684
3 - 30 March; 5 May - 1 June; 11 Aug - 7 Sept

25 hours a week (max 12 per class). Each lesson is 60 minutes. Entry level: Intermediate.





Examination Preparation

- IELTS, Cambridge and TOEFL exam preparation
- Focused study for a term, semester or academic year
- Achieve qualifications for your future in a maximum class size of 12

IELTS Exam Preparation

The IELTS exam is recognised by universities, colleges and professional bodies for university entrance.

For more information please see page 31.

We believe that just doing practice IELTS exams and exercises is not the best way to raise your IELTS level. To be successful in this exam you need a wide range of vocabulary and syntax. Our course is designed to build these areas using engaging, authentic situations while providing plenty of exam skills and practice. Through weekly reviews and coaching, monthly tests, regular filming and mock IELTS tests we measure your progress clearly and visibly to highlight strengths, needs and objectives.

Our course helps you to:

- be confident in handling all aspects of the exam
- express your thoughts and opinions fluently
- use grammar and vocabulary effectively
- overcome anxiety with intensive exam practice

Add extra individual lessons

Make your course more intensive by adding 5 one-to-one hours per week for extra exam focus.

University counselling service

We offer a free educational counselling service. Our university counsellor advises on the best courses and universities for you.

Course dates and entry level

Courses start every Monday throughout the year. Students should arrive on the Sunday. Entry level: Intermediate

Sample timetable

09.00 - 10.00	Skills Training
10.00 - 10.15	Break
10.15 - 11.15	Accuracy in Grammar
11.15 - 11.30	Break
11.30 - 12.30	Knowledge for a Global Community
12.30 - 13.30	Lunch
13.30 - 14.30	Examination Focus
14.30 - 14.45	Break
14.45 - 15.45	Exam Skills Spoken Performance
15.45 - 16.00	Break
16.00 - 17.00	Individual lesson (IELTS Combination)

Timetables are samples and may be subject to change.

Fees per week

Bournemouth, Brighton, Cambridge, Edinburgh, Oxford London*				
No of weeks	2-3	4-7	8-11	12-52
IELTS	£451	£421	£391	£366
IELTS Combination	£868	£838	£808	£783

*London: please add the following supplements:

IELTS add £27 per week.

IELTS Combination add £52 per week.

Exam fee is £191. SELT (IELTS Life Skills/IELTS for UKVI-Academic) fee is £263.

IELTS: 25 hours of English and exam skills per week, plus one coaching session per week.

IELTS Combination: 25 hours of English and exam skills per week + 5 hours 1:1 per week.

Cambridge Exam Preparation

Preparing for a Cambridge certificate helps you to master the skills you need to use English in the real world. The exams are based on real life situations where you need to use your English skills.

See page 31 for a description of each Cambridge exam.

Our course helps you to:

- be confident in handling all aspects of the exam
- be able to express yourself fluently
- gain an expanded range of vocabulary
- be able to use grammar and syntax effectively
- overcome anxiety through intensive exam practice

Cambridge Exam Preparation Courses

Start any Monday within the course dates below:

Course dates 2019	Exam dates	BOU	BRI/CAM	EDI	LON	OXF
B2 First (FCE)						
07.01 – 09.03	09.03		✓		✓	✓
03.02 – 16.03	15.03			✓		
10.03 – 18.05	18.05					✓
31.03 – 08.06	08.06		✓			
31.03 – 08.06	08.06/ 11.06	✓				✓
28.04 – 08.06	11.06			✓		
14.04 – 22.06	22.06				✓	
30.06 – 24.08	25.07/ 22.08	✓	✓		✓	✓
06.10 – 14.12	14.12		✓		✓	✓
20.10 – 30.11	03.12			✓		
C1 Advanced (CAE)						
06.01 – 16.03	16.03		✓		✓	✓
03.02 – 16.03	16.03			✓		
03.03 – 11.05	11.05					✓
24.03 – 01.06	01.06		✓			✓
31.03 – 08.06	12.06	✓	✓			
28.04 – 08.06	12.06			✓		
14.04 – 22.06	22.06				✓	
23.06 – 24.08	24.07/ 23.08	✓	✓		✓	✓
22.09 – 30.11	04.12		✓		✓	
29.09 – 07.12	07.12					✓
20.10 – 30.11	04.12			✓		
C2 Proficiency (CPE)						
07.01 – 09.03	09.03					✓
07.04 – 15.06	13.06					✓
30.09 – 07.12	05.12					✓

Key: Oxford (OXF), Cambridge (CAM), London (LON), Brighton (BRI), Bournemouth (BOU), Edinburgh (EDI).

- Students taking the exam at the end of their course may need to book additional nights of accommodation for the week when the exams take place.



Entry level	eg 10 week	eg 3 week
FCE	Intermediate	Upper Intermediate
CAE	Upper Intermediate	Advanced
CPE	Advanced	Very advanced

Fees per week – Cambridge Exam Preparation

25 hours of English language skills including 5 hours of exam skills training and 5 hours of accuracy in examination grammar per week, plus one coaching session per week.

	Bournemouth, Brighton, Cambridge Edinburgh, Oxford	London
2-3 weeks	£451 per week	£478 per week
4-7 weeks	£421 per week	£448 per week
8-10 weeks	£391 per week	£418 per week

Examination fees: FCE, CAE or CPE - £191.

TOEFL Exam Preparation

Prepare for the TOEFL exam in Brighton on our 3 week course. TOEFL is accepted by many institutions around the world for university entrance.

Brighton – 3 week TOEFL course	
Fees per course	£1,353
Course dates	04.08 – 24.08
TOEFL exam date	24.08

TOEFL: 25 lessons of English language skills and exam preparation skills per week, plus one coaching session per week. Each lesson is 60 minutes. Exam fee is £201





Mini Group Courses

- Accelerated learning for professionals and the ambitious
- Unique scenario based course to enhance your effectiveness
- Become a relaxed and confident global communicator

English World ClasSIX

ClasSIX is an accelerated learning programme suitable for professionals and any ambitious learner. There is a maximum of six participants in the scenario-based morning and in the afternoon you join either groups of 12 or have one-to-one sessions. The combination programme replaces the afternoon session with one-to-one coaching.

Your goals are to:

- gain the confidence to communicate fluently
- participate on equal terms in meetings, negotiations and presentations
- develop accuracy in grammar, idioms and vocabulary
- analyse information from written documents
- write reports, emails, letters and presentations
- participate effectively on the telephone or via video conferencing

How we help you

Our unique course has five complementary sessions to give you the tools, skills practice and feedback required for you to rapidly develop your fluency, accuracy and performance in a second language.

Task Knowledge

Through analysis of a realistic scenario you gain the tools to undertake a range of life and business tasks in a second language. You develop the language of meetings and negotiations, and the skills of influencing and persuading, reaching a compromise, assertiveness, critical thinking and problem solving.

Active Scenario

Through role-playing the scenario you refine and enhance your effectiveness. You develop through analysis and feedback on your performance.

Knowledge for the Professional Community

You gain the language and skills you need to be at ease in the specific environment you operate in.

Language Focus

This session builds skills in telephoning, business writing (email, reports, etc) and socialising.

Confident Spoken Performance

In this fluency session you develop confidence through mini role-plays, presentations and public speaking activities. With a focus on rapport building, voice quality, body language, posture and eye contact, the aim is for confident performance in a second language.

English World ClasSIX

Sample Timetable – ClasSIX

08.45 - 09.00	Plenary
09.00 - 10.00	Task Knowledge
10.00 - 10.15	Break
10.15 - 11.15	Active Scenario
11.15 - 11.30	Break
11.30 - 12.30	Knowledge for the Professional Community
12.30 - 13.30	Lunch
13.30 - 14.30	Language Focus
14.30 - 14.45	Break
14.45 - 15.45	Confident Spoken Performance

Timetables are samples and may be subject to change.

English World ClasSIX Combination

ClasSIX Combination is designed for clients wishing to gain the benefits of group and individual tuition. The course comprises 15 hours of small group tuition with 10 hours (ClasSIX 10) or 15 hours (ClasSIX 15) of one-to-one lessons per week in the afternoon to focus on highly specific needs.

ClasSIX fees per week

Fees per course

Cambridge, Oxford, London*

No of weeks	1	2-3	4-7	8-11	12-52
ClasSIX	£737	£647	£617	£587	£562
ClasSIX 10	£1,431	£1,341	£1,311	£1,281	£1,256
ClasSIX 15	£1,865	£1,775	£1,745	£1,715	£1,690

*London: please add the following supplements:

ClasSIX add £39 per week.

ClasSIX 10 add £80 per week.

ClasSIX 15 add £106 per week.

ClasSIX 10: 15 ClasSIX lessons per week (max 6 per class) + 10 1:1 lessons per week. Each lesson is 60 minutes.

ClasSIX 15: 15 ClasSIX lessons per week (max 6 per class) + 15 1:1 lessons per week. Each lesson is 60 minutes.

Dates and entry level

All ClasSIX courses start every Monday throughout the year. Students should arrive on the Sunday. Suitable from lower intermediate to advanced.

BULATS test

A BULATS test can be taken at the end of any course to demonstrate your progress. Fee £41.

Legal English ClasSIX

Develop your knowledge of English for law. The course follows the structure of the ClasSIX course using legal case studies for the Active Scenario, and vocabulary in the Task Knowledge includes civil law (including contract law), EC law and criminal law. The Knowledge for the Professional Community session builds interpersonal and intercultural soft skills. The course includes visits to courts in London or Oxford. The Test of Legal English Skills can be taken if required.

Dates	Course Fees
London 07.07–20.07, 11.08–24.08	£1,372
Oxford 21.07–03.08	£1,294

Legal English ClasSIX: 25 hours a week (15 hours of Legal English in a group of max 6 per class + 10 hours English skills in a group of max 12 per class). Each lesson is 60 minutes. Test of Legal English Skills (TOLES) can be taken on 22 August. Exam fee £113.

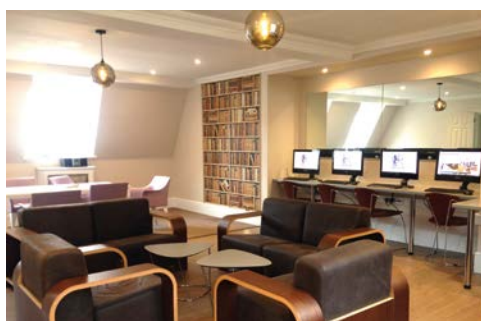
Leadership & Management ClasSIX

This high level course is designed to enhance communicative skills, provide strategies for how to influence and empower others, and to develop a compelling vision lived by those around you. Case studies and authentic situations are used to contextualise what is learnt. Participants are challenged to problem-solve a variety of common communication scenarios, including how to manage change, how to mediate effectively and how to establish a professional culture.

Dates	Course Fees
Oxford 07.07–20.07, 04.08–17.08	£1,294

Leadership & Management ClasSIX: 25 hours a week (15 hours of scenarios and analysis exploring leadership and management in a group of max 6 per class + 10 hours English skills in a group of max 12 per class). Each lesson is 60 minutes.

Entry level: Upper Intermediate.





Individual Tuition

- One-to-one lessons for more personal progress
- Lesson content is an exact match to your requirements
- Accelerated progress for all ages

Individual Tuition

Take our individual courses to make the fastest possible progress. Individual programmes of 30, 25, 20 and 15 hours per week are available for clients requiring the most intensive programmes.

Tailor-made for maximum progress

One-to-one lessons offer students a programme which is designed precisely to their own unique requirements. In this way, you make the maximum possible progress because your teacher is able to focus on your needs and your personal learning style in every lesson.

Teachers set self-study exercises and give direction and guidance for students to maximise their consolidation time between lessons.

English for Specific Purposes

Individual tuition programmes are ideal for those who need to improve their English language skills for specific purposes. Teachers are chosen for their experience in or background knowledge of the subject areas.

Dates and Entry Level

Courses start every Monday throughout the year with arrival on the Sunday. Suitable for beginner to advanced.

Fees per week	Bournemouth	London
Individual Tuition	Brighton, Edinburgh	Cambridge, Oxford
Individual 30		
30 hours 1:1 per week		
Compact 1 week course	£2,694	£2,850
2-3 weeks	£2,604	£2,760
4-7 weeks	£2,574	£2,730
8-11 weeks	£2,544	£2,700
Individual 25		
25 hours 1:1 per week		
Compact 1 week course	£2,260	£2,390
2-3 weeks	£2,170	£2,300
4-7 weeks	£2,140	£2,270
8-11 weeks	£2,110	£2,240
Individual 20		
20 hours 1:1 per week		
Compact 1 week course	£1,826	£1,930
2-3 weeks	£1,736	£1,840
4-7 weeks	£1,706	£1,810
8-11 weeks	£1,676	£1,780
Individual 15		
15 hours 1:1 per week		
Compact 1 week course	£1,392	£1,470
2-3 weeks	£1,302	£1,380
4-7 weeks	£1,272	£1,350
8-11 weeks	£1,242	£1,320

Home Tuition – Live with your teacher

- Study one-to-one in the teacher's home for effective progress
- Tailor made courses for children, teenagers or adults
- Total immersion – learning from morning to night for increased fluency
- Study for professional, academic or cultural purposes

Live and learn in the home of your teacher

Home Tuition is a unique programme combining intensive language training and living in the home of your personal tutor. It is a highly intensive total immersion course for all ages in which your language skills develop quickly and naturally. In one-to-one lessons you work on the specific goals you have, e.g. to pass an exam or make a work presentation. Outside lessons there are many opportunities to practise and refine your English – over breakfast, lunch and dinner, during tea and coffee breaks, and when doing activities with your teacher or their family and friends. A Young Home Tuition course includes 24 hour supervision by the teacher or the teacher's family and at least three visits to local places of interest each week.

Locations

All our teachers live within one hour's travelling time of selected Regent schools in Brighton, Bournemouth, Edinburgh and London. Let us know your requirements and we will propose a suitable homestay which matches your needs.

Supported learning

Each Regent school has a Home Tuition Director of Studies who liaises with you on a regular basis. An initial meeting at the school is arranged to discuss the course. Adult students are shown the school, the cultural programme and facilities which they may use at any time.

Additional activities and events

In addition to the regular Home Tuition course you can add an Extra Activities Package which gives you one full day and one half day activity (add £250 per week). Those looking for a truly exceptional experience (tickets to Premiership football, Horse-racing, Wimbledon, Grand Prix etc) can add a Great British Experience package. Prices vary depending on your chosen event.

Fees per week	Home Tuition	Young Home Tuition (age 7-17)
25 1:1 hours		
1 week	£2,520	£2,695
2-3 weeks	£2,430	£2,605
4-7 weeks	£2,400	£2,575
• London: please add supplement of £214 to fees above		
20 1:1 hours		
1 week	£2,086	£2,261
2-3 weeks	£1,996	£2,171
4-7 weeks	£1,966	£2,141
• London: please add supplement of £188 to fees above		
15 1:1 hours		
1 week	£1,652	£1,827
2-3 weeks	£1,562	£1,737
4-7 weeks	£1,532	£1,707
• London: please add supplement of £162 to fees above		

Dates and Entry Level

Arrive any Sunday during the year, with departure on Saturday. Suitable for beginner to advanced.

En-suite Accommodation

En-suite accommodation supplement per week: £135.

Taxi transfers – one way

	London Heathrow	London Gatwick	Stansted	Edinburgh
Bournemouth	£165	£180	-	-
Brighton	£199	£107	-	-
Edinburgh	-	-	-	£60
London	£112	£124	£135	-





Stowe School, Buckingham



Summer Camps for Children and Teenagers

- Dynamic, intensive immersion courses
- Stunning residential Stowe: Sixth Form, Senior, Exam (age 13-17); Junior (age 7-12)
- Lively seaside homestay course in Bournemouth: Senior, Exam, Compact (age 12-15)

All English – Senior/Junior

Our All English course for children and teenagers is an action-packed immersion course with a choice of residential accommodation at Stowe School, or living with local people (homestay) in Bournemouth. From morning to night students are immersed in a stimulating educational environment.

This intensive course includes 21 hours per week of structured English language lessons and team performance projects, plus 6 hours of afternoon sports or activities geared to the students' interests. As well as a focus on language skills and structure the Senior students have a unique interest based learning session selected from Sports and Health, Music and Performing Arts, Art and Design or Science and Technology. Leadership and team-working skills are followed by evening activities, with 3 evenings a week in Bournemouth spent with the homestay hosts.

All English – Exam

Cambridge: First (FCE) and Cambridge: Advanced (CAE) preparation is available. 21 hours of lessons per week with 11 hours of Exam preparation and 10 hours of language structure and skills. FCE and CAE exams can be taken on site.

What's included: Full board accommodation, tuition (max 12 students per class) and activity programme, 1 full day and 1 half day excursion per week. Transfers from Heathrow, Gatwick, Southampton or Bournemouth between 10.00-19.00 on our Sunday start dates, with return flights on Saturday between 12-7pm. For arrivals outside of these times a private taxi transfer must be booked.

Sixth Form Summer – at Stowe

Accommodated in ensuite single or double rooms, 16 and 17 year olds have the Sixth Form experience on this intensive, academic course. With 25.5 hours of tuition, the Sixth Formers develop their knowledge of either Business Studies and Micro-Economics, or Science, Technology, Engineering and Medicine, or IELTS. Using these subjects they develop their skills of debate and presentation, critical thinking and essay writing. In the afternoons, evenings and on excursions the Sixth Formers spend time with each other engaging in sports, arts and lively social situations.

Compact Study – at Bournemouth

Outside the summer, students aged 12-15 can take an intensive academic course, living in local homestays. 25 hours of tuition includes 15 hours in small classes of just 6, with 10 hours in classes of 12 for a boost to students' English and academic skills.

Typical timetable – Seniors

08.15	Breakfast
09.00 – 09.30	Morning meeting
09.30 – 10.30	Language structure
10.45 – 11.45	Language skills
12.00 – 13.00	Interest based learning
13.00 – 14.00	Lunch
14.00 – 14.15	Homework / Review
14.15 – 15.30	Performance project
16.00 – 17.30	Active session
18.30 – 19.00	Dinner
19.30 – 20.15	Team-Lead
20.30 – 22.00	Evening activity
23.00	Lights out*

* Juniors bedtime is 21.30
This is a typical timetable and may be subject to change.

Regent at Stowe School – Residential

- For ages 7-12, 13-17
- Exclusive. Impressive. Stimulating.
- Excellent sports facilities and grounds

The Residential Programme

The impressive Stowe School is one of England's most prestigious boarding schools. We use the stimulating educational environment and exceptional grounds for arts, culture, sports and nature activities.

Stowe is 6km from Buckingham, and 45 minutes from Oxford. We run excursions to exciting and culturally significant destinations including Oxford, London and Stratford upon Avon.

Regent at Stowe Sixth Form Summer – Course fees

2 weeks	07.07-20.07 21.07-03.08	£3,080
4 weeks	07.07-03.08	£6,060

Exams offered: IELTS.
IELTS exam fee/exam centre transfer: £341 not included.

Regent at Stowe – Course fees All English – Senior, Junior, Exam

2 weeks	07.07-20.07 21.07-03.08 28.07-10.08	£2,720
3 weeks	07.07-27.07 21.07-10.08	£4,035
4 weeks	07.07-03.08	£5,340
5 weeks	07.07-10.08	£6,650

Exams offered: FCE, CAE
FCE exam: 25.07; CAE exam: 24.07
Cambridge exam fee £191 not included.



Regent in Bournemouth – Homestay

- For ages 12-15
- Intensive campus style course
- Homestays within a 30 minute walk

The Homestay Programme

From morning to night, students are surrounded by English in their homestay or in the school. As homestays are close (within a 30 minute walk) 4 evenings a week are spent on campus making a lively and sociable course. Hosts provide all meals with a packed lunch on school and excursion days.

Bournemouth offers a range of attractions including great sandy beaches, shopping and museums. We offer a range of sporting and social activities including beach sports, BBQs, dance workshops and talent shows.

Excursions to local towns and cities including Swanage and Christchurch and also to larger destinations including Bath and London.

Regent in Bournemouth – Course fees All English – Senior, Exam

Start any Sunday between: 15.04 – 28.04 Easter
16.06 – 24.08 Summer

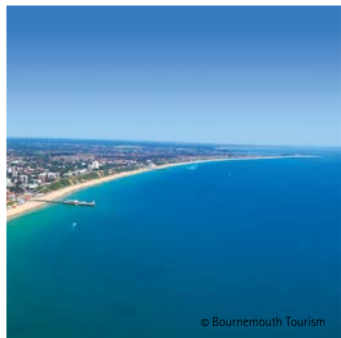
1 week	£1,075
2 weeks	£2,040
3 weeks	£3,015
4 weeks	£3,980
5 weeks*	£4,950

*For courses over 5 weeks, please add £975 for each additional week

Exams offered: FCE, CAE.
FCE exam: 25.07, 22.08; CAE exam: 24.07, 23.08
Cambridge exam fee £191 not included.

Regent in Bournemouth Compact Study – Course fees (per week)

Start any Sunday (except between 16/06 and 24/08)	
1 week	£1,042
2-3 weeks	£952
4-7 weeks	£922



© Bournemouth Tourism

Regent Scanbrit in Bournemouth

- Location close to the beach in a quiet area of Bournemouth
- Focused atmosphere, ideal for serious study
- Separate teenager course for 12-15s in the summer and at Easter
- Compact Study course for young learners outside summer

Ideal for focused study

We are in a quiet area of town making us an ideal place for relaxed, focused study. Our homestays are conveniently located, usually less than a 30 minute walk to the school. Bournemouth's town centre is within easy reach with its vibrant nightlife, theatres and restaurants. Nearby are great places to visit including the New Forest, and the famous Jurassic Coast. London is only 95 minutes by train.

On our junior courses students are surrounded by English from morning to night with events at the school on 4 evenings a week. With our Family Course

parents can study an adult course at the same time. The school is a converted family house with a student lounge, presentation room, table tennis and outside gardens used for sports and barbecues.

Personal attention

We are very proud of our friendliness, our warmth of welcome, and the high levels of personal attention and support you can expect when you are with us. We are committed not only to helping you make progress with your studies, but also to enjoy a social and cultural experience in the UK.

Fact file

Courses	English World; English World a.m.; IELTS Preparation; Cambridge Exam Preparation; Individual Tuition; Home Tuition; All English – Senior/Exam; Compact Study; Family Course
Minimum age	16 (Residential accommodation available for students aged 18 and over) 12-15 on All English – Senior/Exam
Facilities	Wifi / internet access, computer centre, student lounge, garden
Open all year	Except 25 Dec, 26 Dec, 1 Jan
Location	300 metres from the beach, 5 km from Bournemouth city centre
What's included	All tuition, Regent file, Certificate of Achievement

Accommodation fees per week

Option	Single room	Extra night
Homestay – Bed, breakfast and evening meal	£205	£29
Ensuite Homestay – Bed, breakfast and evening meal (subject to availability)	£325	£49
Residence – Standard room (year round, min. age 18)	£241	£37
Residence – Ensuite room (year round, min. age 18)	£317	£48

• Arrival day is Sunday, departure day is Saturday

Transfers

Bournemouth is well served by bus and train connections from the UK's airports. Tickets are purchased by the student at the time of travel. Alternatively, we offer a private taxi service on arrival and departure. The taxi reservation is made by the school and charged on the course invoice.

	Airport bus	Train	Taxi (one way)
Gatwick	£46 (National Express)	£46	£180
Heathrow	£35 (National Express)	£46	£165
Southampton	–	–	£90
Bournemouth	–	–	£46

Bus and train fares are approximate

Regent Brighton

- Dynamic university city popular with students
- Located in an elegant building a short walk from the sea
- Ideal for learners who wish to study hard in a creative and vibrant city
- Enjoy Brighton's buzzing cosmopolitan atmosphere

An exciting university city

Brighton is an exciting city by the sea with more hours of sunshine than almost anywhere else in the UK. It is close to beautiful countryside and only 50 minutes from London. There are two universities and the city is famous for its social life and entertainment. There is always lots to do in Brighton, making it a very attractive place to study.

The school occupies an elegant building in a leafy residential area within easy reach of the city centre and the seafront. There is free wireless internet access

and you can spend your free time in our student lounge where you can relax and talk with your friends throughout the day. Your teachers help organise your after-school activities programme, so you get to know them socially.

The student experience

Regent Brighton was established in 1978 and has a long history of helping students to achieve their goals in a warm, welcoming environment.

Fact file

Courses	English World; English World a.m.; IELTS Preparation; Cambridge Exam Preparation; TOEFL; Medical English; Individual Tuition; Home Tuition
Minimum age	16
Facilities	Wifi / internet access, student learning lounge, patio garden
Open all year	Except 25 Dec, 26 Dec, 1 Jan
Location	South coast - London 80km
What's included	All tuition, Regent file, Certificate of Achievement

Accommodation fees per week

Option	Single room	Extra night
Homestay – Bed, breakfast and evening meal	£205	£29
Ensuite Homestay – Bed, breakfast and evening meal	£325	£49

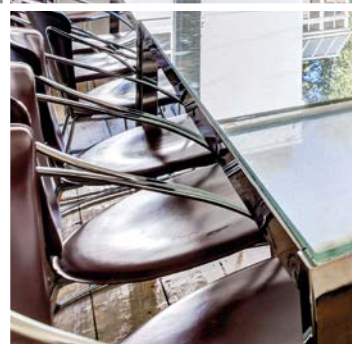
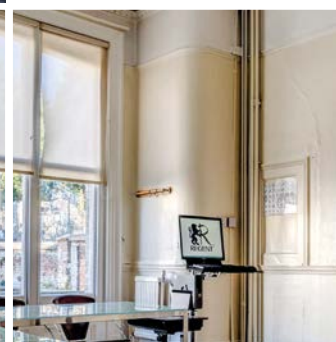
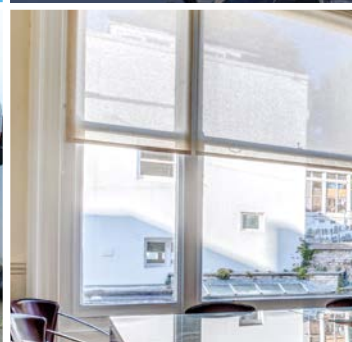
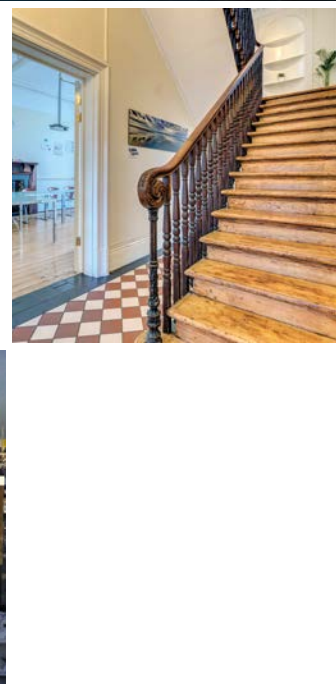
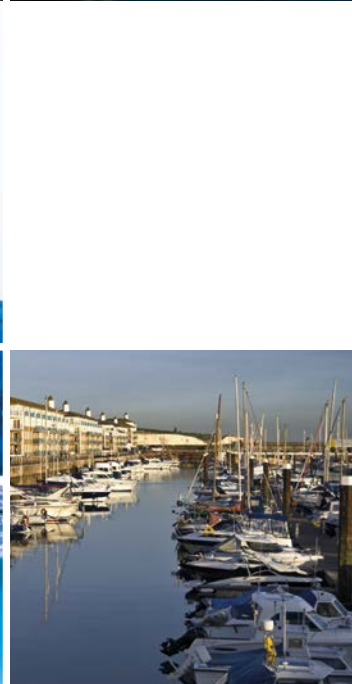
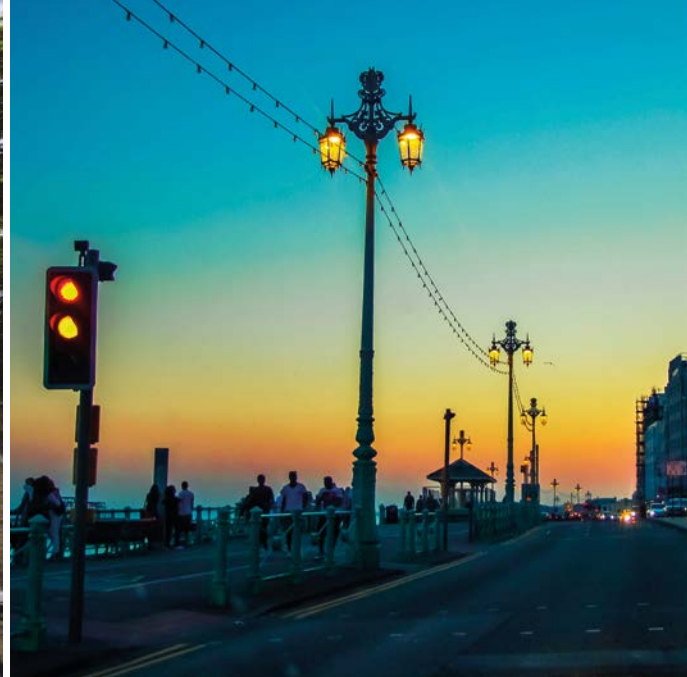
- Arrival day is Sunday, departure day is Saturday

Transfers

Brighton is well served by bus and train connections from the UK's airports. Tickets are purchased by the student at the time of travel. Alternatively, we offer a private taxi service on arrival and departure. The taxi reservation is made by the school and charged on the course invoice.

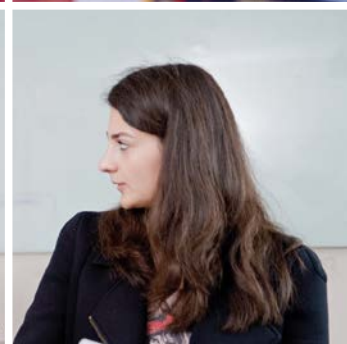
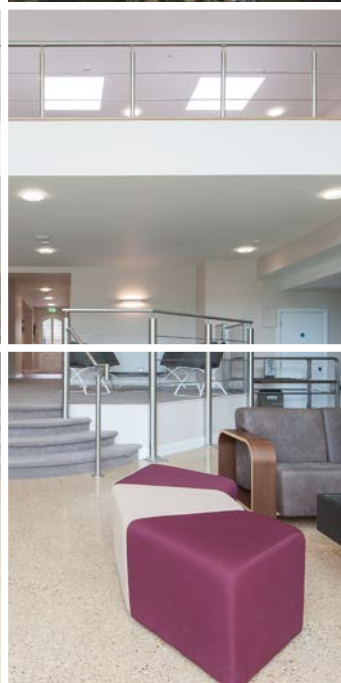
	Airport bus	Train	Taxi (one way)
Gatwick	£12 (National Express)	£12	£107
Heathrow	£35 (National Express)	£58	£199
Luton/Stansted	–	–	£225
Newhaven Ferry Port	–	–	£50

Bus and train fares are approximate





King's College Cambridge



Regent Cambridge

Regent Cambridge

- Study in a world famous educational centre
- Purpose built educational environment in city centre
- Ideal for serious study in an academic setting
- Enjoy Cambridge's sophisticated architecture, arts and culture

A unique university atmosphere

One of the most famous cities for learning in the world, Cambridge is beautiful, historic and home to Cambridge University. You can visit colleges and museums, learn how to punt on the River Cam, or just relax and have fun in the city's many restaurants and bars. There is lively nightlife, and entertainment for everyone.

We specialise in IELTS programmes that prepare students for university. In the middle of one of the

liveliest and most cosmopolitan areas of central Cambridge, our school has excellent facilities including a language learning lounge and large patio garden.

As well as being accredited by the British Council for the teaching of English, Regent Cambridge is also accredited by the Independent Schools Inspectorate and is a UKVI Tier 4 sponsor.



Fact file

Courses	English World; English World a.m.; IELTS Preparation; Cambridge Exam Preparation; English World ClasSIX; Individual Tuition
Minimum age	16 (Residential accommodation available for students aged 18 and over)
Facilities	Wifi / internet access, student learning lounge, garden
Open all year	Except 25 Dec, 26 Dec, 1 Jan
Location	London 80 km
What's included	All tuition, Regent file, Certificate of Achievement

Accommodation fees per week

Option	Single room	Extra night
Homestay – Bed, breakfast and evening meal	£225	£33
Ensuite Homestay – Bed, breakfast and evening meal	£345	£53
Residence (summer only, min. age 18) Bed, breakfast	£389	£59

- Arrival day is Sunday, departure day is Saturday

Transfers

Cambridge is well served by bus and train connections from the UK's airports. Tickets are purchased by the student at the time of travel. Alternatively, we offer a private taxi service on arrival and departure. The taxi reservation is made by the school and charged on the course invoice.

	Airport bus	Train	Taxi (one way)
Gatwick	£41 (National Express)	£35	£187
Heathrow	£35 (National Express)	£46	£176
Stansted	£14 (National Express)	£14	£90
Luton	£24 (National Express)	£41	£107

Bus and train fares are approximate

Regent Edinburgh

- Scotland's vibrant and cosmopolitan capital
- Impressive school building in the heart of Edinburgh
- Ideal for serious study in an historic and cultural capital
- Enjoy Edinburgh's warm, friendly and welcoming atmosphere

A cultural experience in Scotland's capital

Edinburgh is an exciting, cosmopolitan city offering many attractions to visitors including a great many museums, galleries and buildings of historical and architectural interest. As a university city, it caters for students and offers a fantastic social life. Edinburgh is also the home of the August Edinburgh Festival and New Year street party which are both visited by thousands of people every year. Places of interest include Edinburgh Castle and the Scottish Parliament. The spectacular Highlands are within easy reach of the city.

The school is located in a beautiful Georgian building in the city centre, a short walk from the famous Princes Street, Edinburgh Castle and the Botanic Gardens. The facilities include free internet access and Wifi. There is a student study centre and student common room with TV and drinks facilities.

Our student community

As a smaller school, we are able to help students accomplish their goals in a highly supportive environment. We pride ourselves on offering a relevant and enriching experience.

Fact file

Courses	English World; English World a.m.; IELTS Preparation; Cambridge Exam Preparation; Individual Tuition; Home Tuition; Literature & Culture
Minimum age	16 (Residential accommodation available for students aged 18 and over)
Facilities	Wifi / internet access, student study centre, student lounge
Open all year	Except 25 Dec, 26 Dec, 1 Jan
Location	City centre
What's included	All tuition, Regent file, Certificate of Achievement

Accommodation fees per week

Option	Single room	Extra night
Homestay – Bed, breakfast and evening meal	£225	£33
Ensuite Homestay – Bed, breakfast and evening meal	£345	£53
Summer Residence (summer only, min. age 18) Self-catering	£325	£49

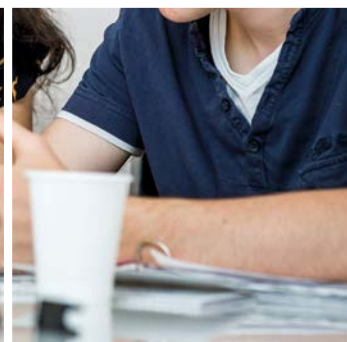
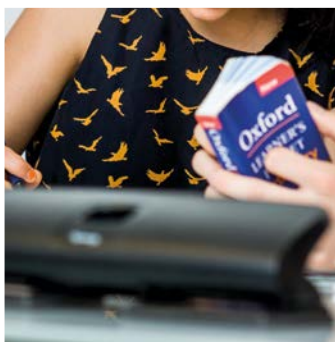
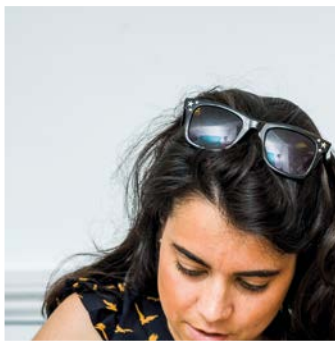
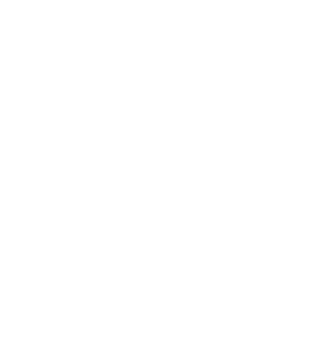
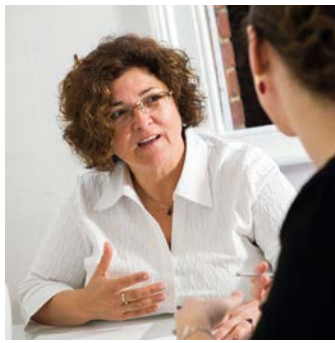
- Arrival day is Sunday, departure day is Saturday

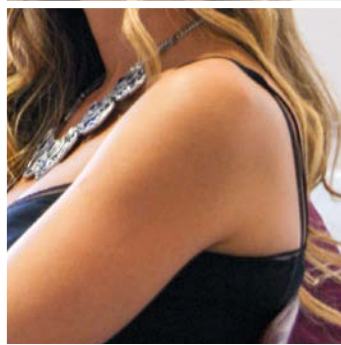
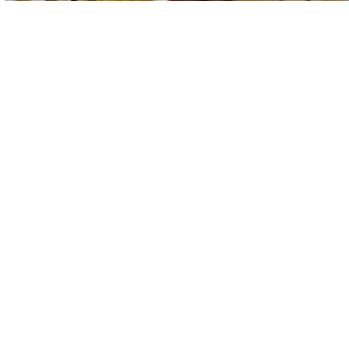
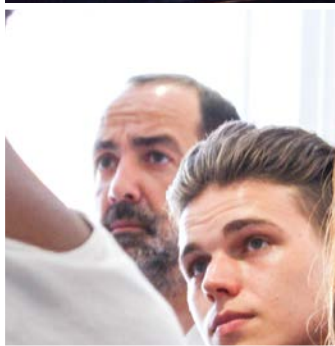
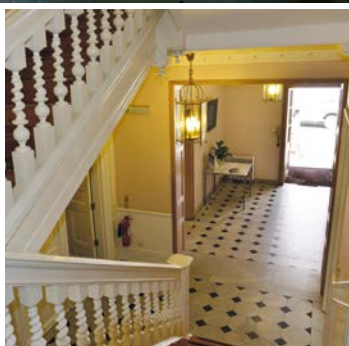
Transfers

Edinburgh is well served by bus and train connections from the UK's airports. Tickets are purchased by the student at the time of travel. Alternatively, we offer a private taxi service on arrival and departure. The taxi reservation is made by the school and charged on the course invoice.

	Airport bus	Taxi (one way)
Edinburgh	£7 (Edinburgh Airlink)	£60

Bus and train fares are approximate





Regent London

- One of the world's great capital cities
- Magnificent school in the heart of London
- Ideal for motivated, serious learners
- Enjoy the capital's many attractions and dynamic social life

Study in the heart of the capital

Our prestigious school has an enviable location in the very heart of the capital: a few minutes walk from Big Ben, Trafalgar Square, Covent Garden and London Theatreland. In London there really is something for everyone – perhaps visiting the National Gallery, or going on a boat trip on the Thames, or seeing a top London show?

Established in 1964, Regent London was the first Regent school. We have over 50 years' experience of teaching English so you can be sure of reaching your academic goals with us.

We occupy the whole of a grand historic building in a quiet street. The building belonged to the famous diarist, Samuel Pepys. It is next to Embankment Gardens and the River Thames – a quiet oasis of learning in the heart of busy London.

Rewarding experience

The school offers an extremely comfortable learning environment. Our school team is dedicated to giving you a rewarding learning experience and enjoyable stay. As our school is truly multinational, it's easy to practise your English and mix with people and cultures from around the world.

Fact file

Courses	English World; English World a.m.; IELTS Preparation; Cambridge Exam Preparation; English World ClasSIX; Legal English ClasSIX; Individual Tuition; Home Tuition
Minimum age	16 (Residential accommodation available for students aged 18 and over)
Facilities	Wifi / internet access, student lounge, language learning centre
Open all year	Except 25 Dec, 26 Dec, 1 Jan
Location	Central London
What's included	All tuition, Regent file, Certificate of Achievement

Accommodation fees per week

Option	Single room	Extra night
Homestay – Bed, breakfast and evening meal	£275	£42
Homestay with private bathroom – Bed, breakfast and evening meal	£475	£68
Centrally located residences – offering single or twin studios	from £380	

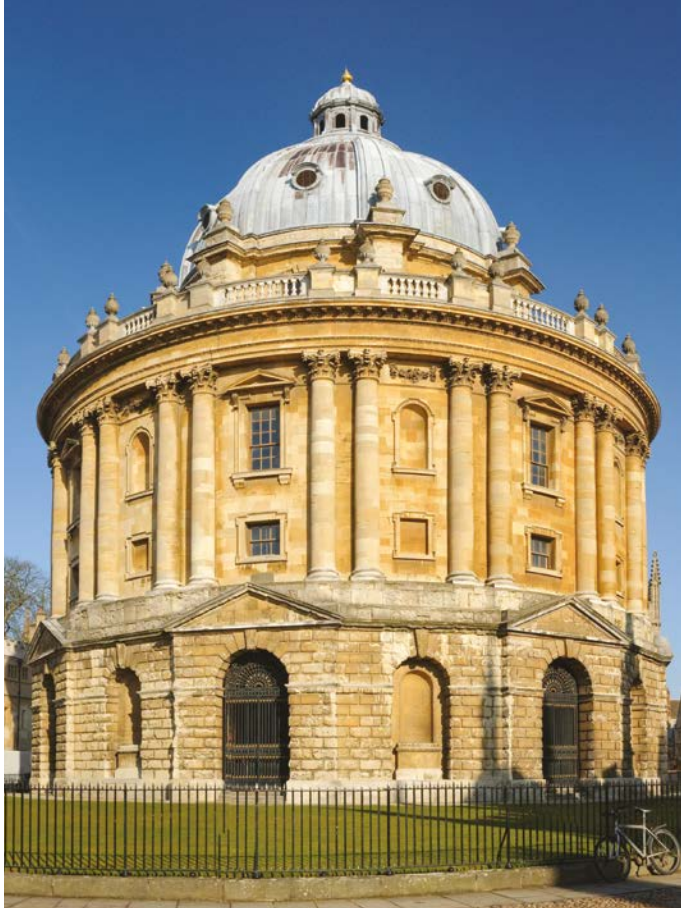
• Arrival day is Sunday, departure day is Saturday

Transfers

London is well served by bus and train connections from the UK's airports. Tickets are purchased by the student at the time of travel. Alternatively, we offer a private taxi service on arrival and departure. The taxi reservation is made by the school and charged on the course invoice.

	Airport bus	Train	Taxi (one way)
Gatwick	£14 (National Express)	£24	£124
Heathrow	£14 (National Express)	£24	£112
Stansted	£14 (Easybus)	£30	£135
London City	£14 (National Express)	£7 (Underground)	£118
St Pancras	£7 (London bus services)	£7 (Underground)	£78

Bus and train fares are approximate



Regent Oxford

- World famous university city
- Impressive school with large garden
- Ideal for serious, driven learners
- Enjoy Oxford's elite academic atmosphere

Experience a city rich in history

Oxford is world famous for its university, and it has a huge amount to offer its visitors. There are lots of cultural events, a lively social scene, beautiful buildings and a variety of international restaurants. The city is steeped in history and the air of academic excellence is reflected in our school's culture. Students often comment that the unique atmosphere of the school is both professional and personal.

The school is situated in an impressive Victorian building surrounded by a picturesque, typically English garden very near to the centre of Oxford.

Students use our library, student lounge, conservatory, computer centre and generous catering service. We offer an exciting cultural programme with plenty of academic, social and cultural events as well as weekend excursions.

Learning experience

Regent Oxford is a centre of academic excellence for which we have been renowned locally and internationally since we were established in 1953. Our goal is to provide you with a learning experience that has an immediate impact and a lasting effect on your life.

Fact file

Courses	English World; English World a.m.; IELTS Preparation; Cambridge Exam Preparation; English World ClasSIX; Leadership & Management ClasSIX; Legal English ClasSIX Literature & Culture; Individual Tuition
Minimum age	16 (Residential accommodation available for students aged 18 and over)
Facilities	Wifi / internet access, computer suite, garden and conservatory, library, student lounge
Open all year	Except 25 Dec, 26 Dec, 1 Jan
Location	Oxford city centre 1.5 km, London 80 km
What's included	All tuition, Regent file, Certificate of Achievement

Accommodation fees per week

Option	Single room	Extra night
Homestay – Bed, breakfast and evening meal	£225	£33
Ensuite Homestay – Bed, breakfast and evening meal	£345	£53
Residence – Standard room (min. age 18)	£414	£63
Ensuite room (min. age 18)	£472	£72
Private Apartments	from £750	

• Arrival day is Sunday, departure day is Saturday

Transfers

Oxford is well served by bus and train connections from the UK's airports. Tickets are purchased by the student at the time of travel. Alternatively, we offer a private taxi service on arrival and departure. The taxi reservation is made by the school and charged on the course invoice.

	Airport bus	Train	Taxi (one way)
Gatwick	£35 (Airline bus)	£46	£204
Heathrow	£24 (Airline bus)	£46	£158
Luton	£24 (National Express)	£46	£193

Bus and train fares are approximate

Terms and Conditions

1. Definitions

1.1 When the following words with capital letters are used in these Terms, this is what they will mean:

Booking: your booking for one of Our Courses;

Courses: the language training courses and associated services advertised on Our website;

Deposit: the sum of 300 GBP;

Event Outside Our Control: is defined in clause 8.2;

Fees: the fees payable by you in respect of your Booking;

Terms: the terms and conditions set out below;

We/Our/Us: Instill Education Limited (trading as "Regent") a company registered in England and Wales under company number 01293463 and having its registered office at 38 Binsey Lane, Oxford OX2 0EY, United Kingdom. Tel: +44 (0)1865 258300

1.2 When we use the words "writing" or "written" in these Terms, this includes e-mail unless We say otherwise.

2. Bookings

2.1 Bookings can be made by completing and submitting the form on Our website together with payment of your Deposit or the total Fees (as applicable, see clause 3.1).

2.2 Please ensure that you read these Terms carefully, and check that the details of your Booking are complete and accurate, before you make your Booking. If you think that there is a mistake, please contact Us to discuss. We will confirm any changes in writing to avoid any confusion between you and Us.

2.3 When you make a Booking with Us, this does not mean that We have accepted it. Our acceptance of the Booking will take place as described in clause 2.4. If We are unable to confirm your Booking, We will inform you of this.

2.4 These Terms will become binding on you and Us when we confirm your Booking in writing to you, at which point a contract will come into existence between you and Us. We will assign a unique reference number to your Booking and inform you of it when We provide confirmation. Please quote this number in all subsequent correspondence with Us relating to your Booking.

3. Payment of Fees

3.1 Where the Course is due to begin more than six weeks from the date of your Booking, a Deposit is payable at the time of making your Booking. Where the Course is due to begin less than six weeks from the date of your Booking, the Fees must be paid in full at the time of your Booking.

3.2 When We confirm your Booking under clause 2.4, We will provide a statement showing the balance of the Fees due to be paid, which should be settled at least four weeks before the Course starting date. Please note that you will not be allowed to attend any Course unless payment of the Fees has been made in full.

3.3 All Fees must be paid in Sterling (GBP). All bank charges are payable by you.

3.4 All refunds due under these Terms will be paid to the person from whom payment was originally taken, using the same method of payment as used by them.

4. Changes to Bookings

4.1 If you wish to change your Booking by switching to another Course, you must provide at least 10 days' notice of such change to Us in writing, otherwise you will be expected to attend the Course originally booked or cancel your Booking under clause 7.

4.2 Where you have given the appropriate notice under clause 4.1:

(a) We will refund any difference between the cost of the original Booking and your revised Booking on the last date of the Course to which you have switched (whether or not you remain on the Course for its full duration); or

(b) You may be required to pay any difference between the cost of the original Booking and your revised Booking at the time of your request.

4.3 If you wish to take a holiday at any time during the Course, you must give Us at least two weeks' notice in writing. No refunds are payable in these circumstances.

4.4 We reserve the right to cancel a Course, or make changes to course arrangements, as a result of Events Outside Our Control. Clause 8 will apply in such circumstances.

5. Our liability to you

5.1 Where We provide any assistance to you in making travel and accommodation requirements, We do so only as an intermediary between you, travel organisations and host families. Unless and to the extent caused by Our negligence, We will not be liable to you for any losses arising from any delays or failures relating to travel and accommodation arrangements. We will, however, use our reasonable endeavours to defend your interests and mediate on your behalf in the event of any breach of contract on the part of a travel organisation or host family.

5.2 If We fail to comply with these Terms, We are responsible for loss or damage you suffer that is a foreseeable result of Our breach of the Terms or Our negligence, but We are not responsible for any loss or damage that is not foreseeable. Loss or damage is foreseeable if it is an obvious consequence of Our breach or if it was anticipated by you and Us at the time we entered into this contract.

5.3 We do not exclude or limit in any way Our liability for death or personal injury caused by Our negligence or the negligence of Our employees, agents or subcontractors, or for any liability which cannot be excluded or limited by law.

6. Insurance, accommodation, students visas and study permits

6.1 You are responsible for arranging your own travel and medical insurance (including the costs of repatriation in the case of illness or accident) and student visitor visa.

6.2 If you are denied a student visitor visa and provide Us with a copy of the rejection letter on or before the first day of the Course, the We will refund all Fees paid.

6.3 Accommodation will begin on the Sunday before the Course starts and will end on the Saturday after the Course ends. If you have asked Us to arrange host family accommodation, you will receive details of your host family address at least five days before the Course starting date (unless you have made a late Booking) to enable you to inform the host family of your approximate time of arrival.

7. Your rights to cancel and applicable refund

7.1 You have the following rights to cancel your Booking:

(a) you have a legal right to cancel your Booking within 14 calendar days of the date of your Booking, in which event We will, subject to clause 7.3, refund all of the Fees including the Deposit; or

(b) you may cancel your Booking at any time after the period of 14 calendar days referred to in clause 7.1(a) but before the Course has begun, in which event We will retain the Deposit and refund the balance of any Fees paid by you.

7.2 To exercise your rights to cancel under clause 7.1, you must inform Us of your decision by making a clear statement to this effect by completing the cancellation form on Our website or by contacting Us.

7.3 The law requires us to obtain your express consent to Us providing Our services where the starting date of the Course falls during the 14 day cancellation period referred to in clause 7.1(a). By making your Booking, you will be treated as giving this consent. You

acknowledge that if you subsequently cancel, We will be entitled to deduct an amount from the Fees paid which is in proportion to the services that We have performed up to the date of your cancellation.

7.4 Once a Course has begun, you may cancel your Booking with immediate effect by giving Us written notice if:

(a) We break this contract in any material way and We do not correct or fix the situation within 30 days of you asking Us to do so in writing;

(b) We go into liquidation or a receiver or an administrator is appointed over Our assets;

or (c) We are affected by an Event Outside Our Control.

8. Our rights to cancel and applicable refund

8.1 We will not be liable or responsible for any failure to perform, or delay in performance of, any of Our obligations under these Terms that is caused by an Event Outside Our Control.

8.2 An Event Outside Our Control means any act or event beyond Our reasonable control including but not limited to strikes or other industrial action, civil commotion, terrorist attack or threat of terrorist attack, epidemic, adverse weather conditions or other natural disasters.

8.3 If an Event Outside Our Control takes place that affects the performance of Our obligations under these Terms:

(a) We will contact you as soon as reasonably possible to notify you; and

(b) We will, where possible, propose alternative arrangements (which may include alternative dates or venues) for the Course.

8.4 You may cancel your Booking if any alternative arrangements proposed by Us are unsuitable for any reason, in which case We will refund all Fees paid in advance for the Course.

8.5 We reserve the right to refuse your attendance on the course if you are suffering from any illness, medical condition or mental or physical disability which was not disclosed at the time of Booking.

8.6 We expect students to behave reasonably at all times towards other students, school staff and accommodation providers and to respect cultural, racial and religious differences.

If We have to ask you to leave the school because your behaviour is unacceptable, you will not be entitled to any refund of fees. Unacceptable behaviour includes unsatisfactory attendance or work, aggressive physical or verbal behaviour towards other students or members of staff, drug abuse, dishonesty, criminal behaviour or deliberately causing damage to the school premises or accommodation. We expect all students to adhere to the standards and rules We set. If We deem your behaviour unacceptable or have asked you to leave the school you will not be allowed to remain in accommodation We have arranged.

9. How we may use your personal information

9.1 We will use the personal information (including sensitive information about your health, religious beliefs and practices or dietary requirements) that you provide to Us:

(a) to administer and provide Our Courses to you;

(b) to process payment in relation to any Booking;

(c) for internal training and monitoring purposes; and

(d) to inform you about similar Courses and other services that We provide, but you may stop receiving these at any time by contacting Us.

9.2 We will not give your personal data to any third party other than:

(a) as strictly necessary for Us to perform Our contract with you;

(b) to host families; or

(c) to the schools and offices within our group companies (which means our subsidiaries, our ultimate holding company and its subsidiaries, as defined in section 1159 of the UK Companies Act 2006) including those outside the European Union.

9.3 You have the right to access information held about you. Your right of access can be exercised in accordance with the Data Protection Act 1998. Any access request may be subject to a fee of £10 to meet Our costs in providing you with details of the information We hold about you.

9.4 We may wish to use photographs and audio visual media containing your image or likeness in our marketing and promotional materials and you hereby consent that We may do so in all and any media for such purposes. If you would prefer that We do not, you should notify Us by completing the relevant section of the registration form. We will also confirm this with you where we have a reasonable opportunity to do so. Copyright in any photographs or audio visual media continuing your image or likeness shall belong to Us and shall not entitle you to receive any royalties or other payments.

10. Specific terms for Young Learners (7-17 years)

10.1 We reserve the right to issue disruptive students with a warning letter and, if there is no improvement in behaviour, to send them home at their parents' or guardians' expense.

10.2 We further reserve the right to send home without a warning letter any student committing a serious offence, especially offences involving the police, including theft, smoking in any school building and the possession, purchase or consumption of alcohol or illegal drugs.

10.3 For children who will stay with host families, parents may indicate on the registration form whether they authorise their child to stay out in the evenings without supervision. Generally, this means that children aged 13 and under are not allowed out unsupervised after their evening meal; those aged 14 and above must return by 22:00. However, students must also respect the house rules of the host family, where these times may inconvenience the family. Children on residential courses have evening activities and are not allowed to stay out unsupervised. Please note We cannot be held responsible for any incident whilst the student is out unsupervised.

10.4 Students aged 18 and over must register for an adult school. We reserve the right to transfer an 18 year old from a young learners' Course.

11. Other important terms

11.1 These Terms set out the entire agreement between you and Us relating to your Booking.

11.2 We may transfer Our rights and obligations under these Terms to another organisation, and We will always notify you in writing if this happens, but this will not affect your rights or Our obligations under these Terms.

11.3 This contract is between you and Us. No other person shall have any rights to enforce any of its terms.

11.4 Each of the clauses in these Terms operates separately. If any court or relevant authority decides that any of them are unlawful, the remaining paragraphs will remain in full force and effect.

11.5 If We fail to insist that you perform any of your obligations under these Terms, or if We do not enforce Our rights against you, or if We delay in doing so, that will not mean that We have waived Our rights against you and will not mean that you do not have to comply with those obligations. If We do waive a default by you, We will only do so in writing, and that will not mean that We will automatically waive any later default by you.

11.6 These Terms are governed by English law. You and We both agree to submit to the non-exclusive jurisdiction of the English courts.

Enrolment Form (Please enrol at www.regent.org.uk/learn-english/booking or complete the form below)

Choose your location, course and dates

Regent School: Bournemouth Brighton Cambridge Edinburgh London Oxford

Please choose your course:

- | | | |
|--|---|--|
| <input type="checkbox"/> English World | <input type="checkbox"/> IELTS Exam Preparation | <input type="checkbox"/> English World ClasSIX |
| <input type="checkbox"/> English World Combination | <input type="checkbox"/> IELTS Combination | <input type="checkbox"/> English World ClasSIX 10 |
| <input type="checkbox"/> English World a.m. | <input type="checkbox"/> Cambridge Exam Preparation FCE | <input type="checkbox"/> English World ClasSIX 15 |
| <input type="checkbox"/> Literature & Culture | <input type="checkbox"/> Cambridge Exam Preparation CAE | <input type="checkbox"/> Legal English ClasSIX |
| <input type="checkbox"/> Individual 30 | <input type="checkbox"/> Cambridge Exam Preparation CPE | <input type="checkbox"/> Leadership & Management ClasSIX |
| <input type="checkbox"/> Individual 25 | <input type="checkbox"/> Home Tuition 25 | |
| <input type="checkbox"/> Individual 20 | <input type="checkbox"/> Home Tuition 20 | <input type="checkbox"/> TOEFL |
| <input type="checkbox"/> Individual 15 | <input type="checkbox"/> Home Tuition 15 | <input type="checkbox"/> Medical English |

Additional one-to-one hours per week? 5 hours per week 7.5 hours per week

Course start date: _____ Course finish date: _____

Choose your accommodation

If you choose a residence, please write 1st and 2nd choices

Homestay single room Homestay en-suite Hotel Residence En-suite residence

Accommodation start date: _____ Accommodation finish date: _____

Please tell us about any special requirements (eg: disability, allergies, diet)

Do you smoke? Yes No Would you prefer non-smoking accommodation? Yes No

What is your level of English?

Beginner Elementary Pre Intermediate Intermediate Upper Intermediate Advanced Very Advanced

Have you studied with Regent before? Yes No Which School? _____ When? _____

Transfers

Would you like a taxi transfer to your accommodation?

Yes on arrival Yes on departure Yes on arrival and departure No

Arrival: Airport/Station _____ Flight number _____ Date (dd/mm/yy) _____ Time _____

Departure: Airport/Station _____ Flight number _____ Date (dd/mm/yy) _____ Time _____

Documents by courier

We can send your documents to you by email, fax or post. If you would like them sent by international courier we charge £50.

I would like my documents sent by international courier (£50).

Calculating your fees

I would like to pay the full fees I would like to pay deposit of £300 now and the full fees 30 days before the course starts

Course fee _____

Additional one-to-one lessons _____

Accommodation fee (except Home Tuition where accommodation is included in the course fee) _____

Transfer fee _____

Documents sent by courier fee _____

Total cost _____

Personal Details (Please write in CAPITALS)

Family Name _____ First Name _____

Nationality _____ Occupation _____ Date of Birth _____

Male Female Age _____ First Language _____ Second Language _____

How did you hear about Regent? _____

Who is paying for your course? Myself Parents Company Other

Name in Passport _____ Passport Number _____

Home Address _____

Email _____ Tel _____ Mobile _____ Fax _____

Address for invoice (if different) _____

Emergency Contact During Course _____

Relationship to student _____ English spoken yes no Tel _____ Email _____

Reason for studying Academic Professional Other

Name of your college/university (students) _____

Name of your company (professionals) _____

Method of Payment (please tick)

Cheque (UK £ Sterling only) Credit/Debit Card Bank Transfer Cash

Online at www.regent.org.uk/learn-english/booking

Cheque (UK £ Sterling only)

Drawn on British Bank made payable to Instill Education Ltd. Please write student's name on the back of the cheque.

Credit Card Visa Mastercard

I hereby authorise Regent to charge the deposit of: £300 to my card

I hereby authorise Regent to charge the balance of: £ to my card 30 days before the course starts

I hereby authorise Regent to charge the full amount of: £ to my card now

Card number Security Code (last 3 digits on reverse of card)

Valid from Expiry date

Name of cardholder _____

Address of cardholder _____

Signature of cardholder _____

Your agreement and signature

1. I have read and understood the Terms and Conditions.

2. I certify that all the information given by me in this enrolment form is accurate and complete.

3. If applicant is under 18, a parent or guardian must sign this form.

In doing so, the parent or guardian agrees to the Terms and Conditions.

4. I agree to the use of my personal information, including health and religious or dietary requirements, set out in the terms and conditions. Yes No

5. I agree that you can send me occasional information about Regent Language Training courses and services. Yes No

Signature of student _____ Date _____

Signature of parent or guardian (If student is under 18) _____ Date _____

Internationally recognised English language exams for academic and specific purposes

Exam	Level	Typically for	Available dates
IELTS - International English Language Testing System	It is mainly used to show ability from intermediate to advanced: you receive a test report that shows an overall score from 1 (non-user) to 9 (expert user).	Entrance into UK, USA, AUS, NZ universities but is recognised by academic institutions all over the world.	Every month
BULATS - Business Language Testing Service	The BULATS test report shows ability on the Common European Framework for Reference from A1-C2 (beginner to advanced).	Worldwide business and industry recruitment.	On demand in the school
TOLES - Test of Legal English Skills	There are two TOLES exams we recommend: TOLES Higher (Intermediate level) and TOLES Advanced (Advanced).	Entrance into international commercial law firms, in-house legal teams in private companies and top-class translators.	28.08
TOEFL - Test of English as a Foreign Language	The iBT test shows your ability on a scale of 1-120. Each section, Reading, Listening, Speaking and Writing, is scored out of 30 and combined to give your total score.	Entrance into English speaking universities and academic and professional institutions.	Every month
Cambridge English Exams: <ul style="list-style-type: none"> • Cambridge English: B2 First (FCE) • Cambridge English: C1 Advanced (CAE) • Cambridge English: C2 Proficiency (CPE) 	<p>B2 First (FCE): An upper intermediate exam that tests your ability to deal confidently with a range of written and spoken communication situations. Exams are held at least once a month in the UK and the rest of the world. Level B2</p> <p>C1 Advanced (CAE): An advanced exam that tests your ability to communicate with confidence in English for work or study purposes. Exams are held every month in the UK and the rest of the world. Level C1</p> <p>C2 Proficiency (CPE): A very advanced level exam, for learners who have achieved a high level of language skills. Exams are held in March, May, June, July, October, November, December in the UK and the rest of the world. Level C2</p>	Entrance into English speaking educational institutions, businesses and supporting immigration applications.	<p>B2 First (FCE) 09.03; 15.03; 18.05; 08.06; 11.06; 22.06; 25.07; 22.08; 03.12; 14.12</p> <p>C1 Advanced (CAE) 16.03; 11.05; 01.06; 12.06; 22.06; 24.07; 23.08; 04.12; 07.12</p> <p>C2 Proficiency (CPE) 09.03; 13.06; 05.12</p>



bournemouth@regent.org.uk



brighton@regent.org.uk



cambridge@regent.org.uk



edinburgh@regent.org.uk



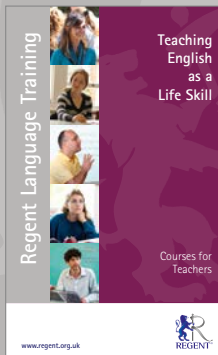
london@regent.org.uk



oxford@regent.org.uk



professionals@regent.org.uk



teachers@regent.org.uk



summerschools@regent.org.uk

Regent Language Training
 info@regent.org.uk
 +44 (0) 1865 258 338
 www.regent.org.uk

